

ARMY TRAINING CENTRE

troop oriented – professional



Schweizerische Eidgenossenschaft
Confédération suisse
Confederazione Svizzera
Confederaziun svizra

Swiss Armed Forces



TASKS

Courses

Provision of initial/basic and advanced training to professional military personnel across all branches of the Armed Forces in cooperation with the Armed Forces College Command and the training units.

Combat Training Centres East / West (CTC)

Support of the Command Operations and the Training Command in achieving basic and operational readiness in the area of simulator-based exercises.



Testing and development

Support of projects within the framework of armament procurement processes across all branches of the Armed Forces. Cooperation concerning questions of weaponry, equipment, training materials as well as munitions. Field testing and the development of live simulation platforms of the CTCs.

Military training areas and firing ranges

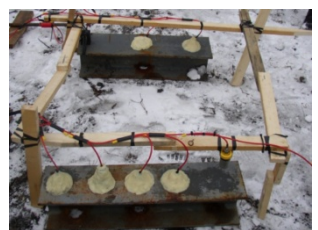
Provision of required infrastructure in support of the troops at the training areas Walenstadt and Bure as well as on the firing ranges St. Luzisteig Hinterrhein and Wichlen.

Responsible at army level for the safety-related interests of the federal firing ranges by the Federal expert military shooting and the 300m / 50m / 25m shooting ranges by the Federal shooting range expert.



Tasks

- Running basic training courses for future military personnel
- Providing advanced training to military professionals in introductory, supplementary and further education courses
- Providing advanced training to experts in shooting skills, close combat techniques and explosive device use in the context of unit training methodology
- Granting military professionals certificates authorising use of means of coercion and explosives
- Continuous monitoring of training-relevant field manuals and regulations
- Cooperating in the production of field manuals
- Coordinating specific training needs with all partners of the Army Training Centre



COMBAT TRAINING CENTRES EAST / WEST



Tasks

- Conducting and supporting simulator-based training of combat techniques and tactical core competencies of the Army up to battalion level
- Supporting troops in preparing, conducting and reviewing exercises by means of simulators
- Reviewing performance within the framework of the Army training controlling system
- Ensuring readiness of the facilities in cooperation with RUAG in support of the Combat Training Centre



MILITARY TRAINING AREAS AND FIRING RANGES

Tasks

- Allocation planning of training areas and firing ranges
- Provision of required infrastructure for users
- Support briefings
- Extension and renovation of infrastructure in cooperation with the local/civil authorities



Military training area Walenstadt



Military training area Bure



Firing range St. Luzisteig



Firing range Hinterrhein



Firing range Wichlen

TESTING AND DEVELOPMENT

Tasks

- Conducting field tests in cooperation with potential end users and troops
- Conducting basic research in the development of weapons and simulation systems
- Producing field manuals and regulations in cooperation with military users
- Organising and running introductory, retraining and training courses on new systems and materials



Shoulder-launched multipurpose weapons



New footwear

Symbolic representation



Shooting simulator for assault rifle 90, new technology



MCES (modular clothing and equipment system)

Symbolic representation



New generation of wheeled armoured vehicles

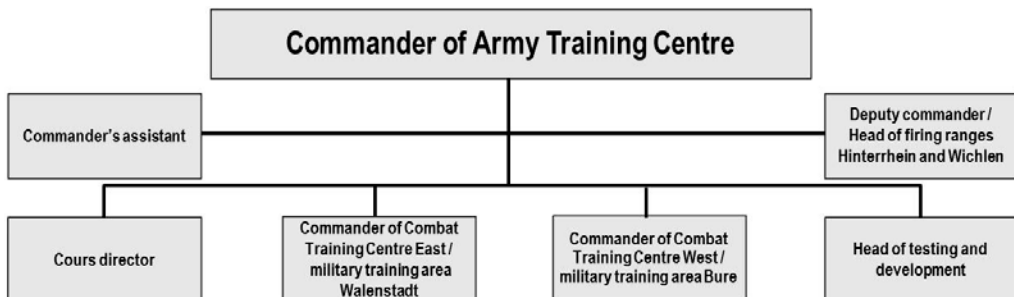
Symbolic representation



Cold protection gloves 17

Symbolic representation

COMMAND STRUCTRE / CONTACTS



Army Training Centre ATC

Kaserne
CH-8880 Walenstadt
Phone +41 58 466 36 36
Fax +41 81 735 22 50

**Army Training Centre
Course command**
Kaserne
Building BK
CH-8880 Walenstadt
Phone +41 58 466 36 36

**Army Training Center
Command of Combat Training
Centre East / military training
area Walenstadt**
Kaserne
Building BK
CH-8880 Walenstadt
Phone +41 58 466 36 36

**Army Training Centre
Command of Combat Training
Centre West / military training
area Bure**
Caserne
CH-2915 Bure
Phone +41 58 483 51 11

**Army Training Centre
Testing and development**
Kaserne
Building VS
CH-8880 Walenstadt
Phone +41 58 466 36 36

**Army Training Centre
Firing range Hinterrhein**
CH-7438 Hinterrhein
Phone +41 58 482 11 11

**Army Training Centre
Firing range Wichlen**
P.O. Box
CH-8767 Elm
Phone +41 58 469 66 14

Our locations / how to find us:

Military Training Area Walenstadt

By train

- Walenstadt railway station
- approx. 15 minutes on foot to the barracks

By car

- Access via the A 3 motorway
- Flums exit (coming from Sargans)
- Walenstadt exit (coming from Zurich)

Military Training Area Bure

By train

- Bure railway station for mil personnel

By car

- Access via the A 16 motorway
- Bure exit
- 'Casernes de Bure' signposts

Firing Range Hinterrhein

With public transport

- To Chur by train
- From Chur to Thusis by train
- From Thusis to northern entrance of San Bernardino tunnel by 'Postauto' bus

By car

- Access via the A 13 motorway
- 'Pz Spl' exit (yellow signpost)

Firing Range St. Luzisteig

By train

- Bad Ragaz railway station
- Transfer from Bad Ragaz with military vehicles

By car

- Access via the A 13 motorway
- Bad Ragaz exit
- Access via Fläsch (signposts)

Firing Range Wichlen

With public transport

- By train to Schwanden
- Local bus from Schwanden to Elm village
- Private or military transport from Elm village to Wichlen

By car

- Access via the A 3 motorway
- Glarnerland exit
- Follow cantonal road to Schwanden
- From Schwanden follow signpost to Elm / Wichlen Training Area